

# Irish Intertidal Fish and Invertebrates

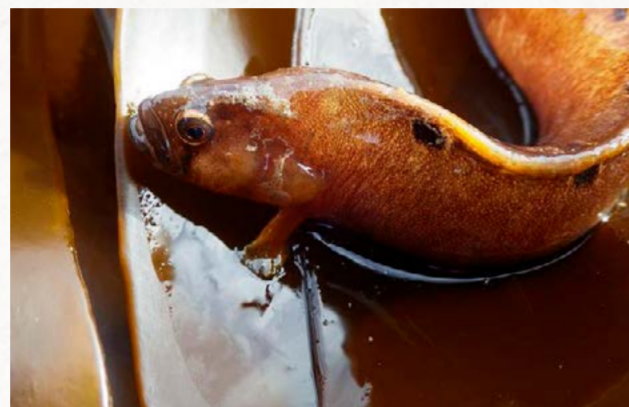


Intertidal areas of rocky shore are one of Ireland's most biodiverse habitats. Among the seaweed covered rocks live a myriad of marine invertebrates and even fish! This poster presents just a few of our common and readily identified intertidal fish and invertebrate species. You can help improve our knowledge of these species by recording intertidal fish and invertebrates for the National Biodiversity Data Centre. Please visit [ExploreYourShore.ie](http://ExploreYourShore.ie) for details on how to take part.



**Common Prawn / Cloicheán coiteann / *Palaemon serratus***

☉ Mid to lower shore in rockpools ☞ Maximum length: 11 cm



**Butterfish / Sleamhnóg / *Pholis gunnellus***

☉ Mid to lower shore ☞ Maximum length: 25 cm



**Shanny / Ceanruán / *Lipophrys pholis***

☉ Mid to lower shore ☞ Maximum length: 16 cm



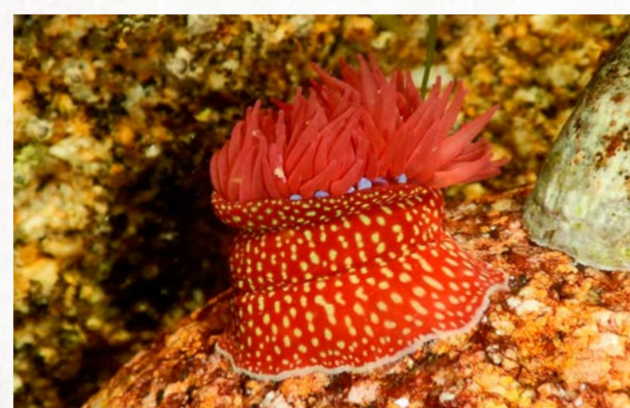
**Purple Sea Urchin / Cuán Mara Dubh / *Paracentrotus lividus***

☉ Whole shore in rockpools ☞ Maximum width: 7 cm



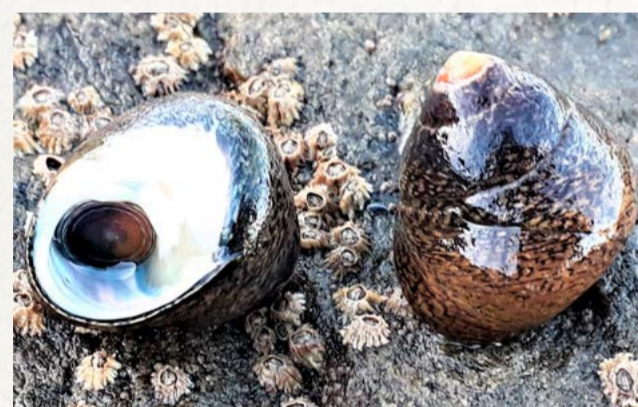
**Beadlet Anemone / Bundún coirnneach / *Actinia equina***

☉ Whole shore ☞ Maximum column width: 5 cm



**Strawberry Anemone / Bundún Sú Talún / *Actinia fragacea***

☉ Lower shore ☞ Maximum column width: 10 cm



**Thick (Toothed) Topshell / Faochán Muire Tiubh / *Phorcus lineatus***

☉ Middle shore ☞ Maximum width: 3 cm



**Dog Whelk / Cuachma Chon / *Nucella lapillus***

☉ Mid to lower shore ☞ Maximum height: 3 cm



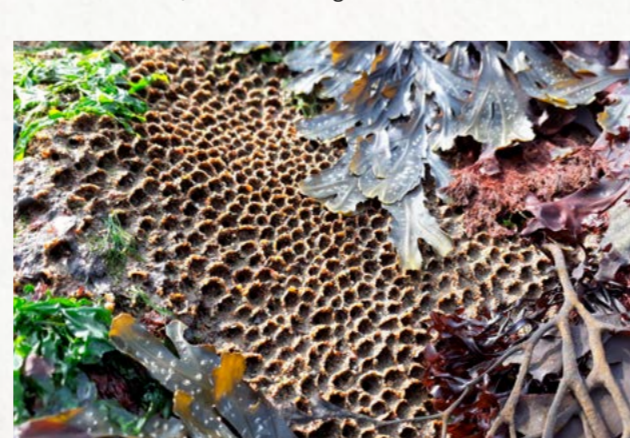
**Edible (Common) Periwinkle / Gioradán / *Littorina littorea***

☉ Whole shore ☞ Maximum height: 5 cm



**Common Shore Crab / Portán Glas / *Carcinus maenas***

☉ Whole shore ☞ Maximum width: 8 cm



**Honeycomb Worm / Péist Mhiltogach / *Sabellaria alveolata***

☉ Lower shore ☞ Maximum thickness of reef: 2 m



**Sea Slater / Cláirseach Thrá / *Ligia oceanica***

☉ Upper shore ☞ Maximum length: 3 cm



**Common Starfish / Crosóg mhara dhearg / *Asterias rubens***

☉ Mid to lower shore ☞ Max. width: 50 cm (smaller intertidally)



**Snakelocks Anemone / Bundún nathairiúil / *Anemonia viridis***

☉ Mid to lower shore in rockpools ☞ Maximum width: 18 cm



**Flat Periwinkle / Faocha leathan / *Littorina obtusata* and *Littorina fabalis***

☉ Mid to lower shore ☞ Maximum height: 1.5 cm



**Spiral Worm / Tiúbphéist Chorntha / *Spirobis (Spirobis) spirobis***

☉ Mid to lower shore ☞ Maximum width: 4 mm



**Common Acorn Barnacle / Garbhán Carraige Coiteann / *Semibalanus balanoides***

☉ Middle shore ☞ Maximum width: 1.5 cm



**Cushion Star / Crosóg fhaoilinne / *Asterina gibbosa***

☉ Lower shore ☞ Maximum width: 5 cm



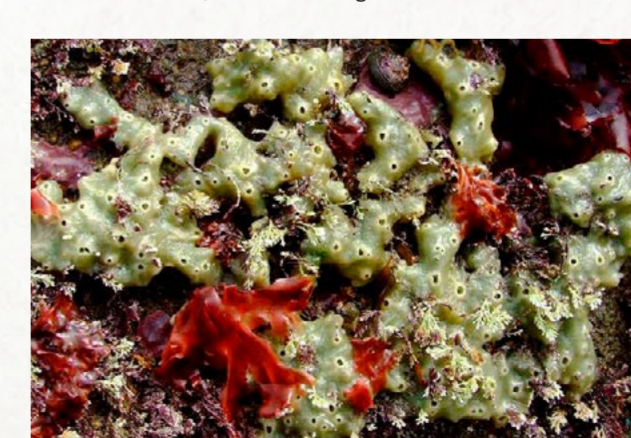
**Flat (Purple) Topshell / Faochán Muire Corcra / *Steromphala umbilicalis***

☉ Whole shore ☞ Maximum width: 2.2 cm



**Common Limpet / Bairneach coiteann / *Patella vulgata***

☉ Whole shore ☞ Maximum length: 6 cm



**Breadcrumb Sponge / Spúinse Grabhrógach / *Halichondria (Halichondria) panicea***

☉ Lower shore ☞ Maximum width: 15 cm (exceptionally 60 cm)



**Common Hermit Crab / Faocha gliomaigh / *Pagurus bernhardus***

☉ Mid to lower shore in rockpools ☞ Max. length (without shell): 3.5 cm



**Green (Shore) Urchin / Cuán Mara Glas / *Psammechinus miliaris***

☉ Lower shore ☞ Maximum width: 6 cm (typically 3.5 cm)



**Grey Topshell / Faochán Muire Glas / *Steromphala cineraria***

☉ Lower shore ☞ Maximum width: 1.5 cm



**Spotted Sea Hare / Giorria mara / *Aplysia punctata***

☉ Lower shore ☞ Maximum length: 7 cm (exceptionally 20 cm)



**National Biodiversity Data Centre**  
Documenting Ireland's Wildlife

